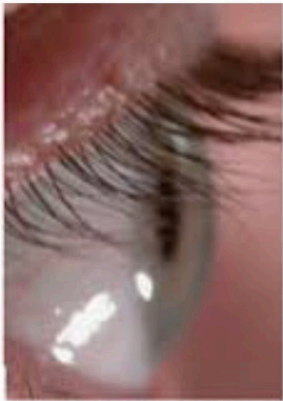


Asthma & Eczema

Why Do We Ask?

People with a history of asthma or eczema are more likely to develop a corneal condition called **Keratoconus**. This is literally “conical cornea” in Latin. When corneas develop a conical contour, vision is distorted, and it changes our approach to how we best manage your vision.



Healthy cornea



Keratoconus

If we think there’s a chance that you might have keratoconus, we’ll use our topographer to measure the contours of your cornea (the clear dome at the front of your eye).

Also, if you have asthma or eczema, and if you have dry or itchy eyes, we might take more than one approach to helping you treat them. Asthma and eczema are often associated with gut health issues. For more information, please see our document on gut health.

